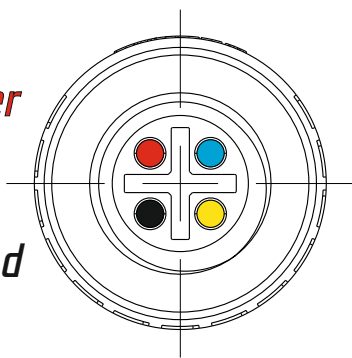
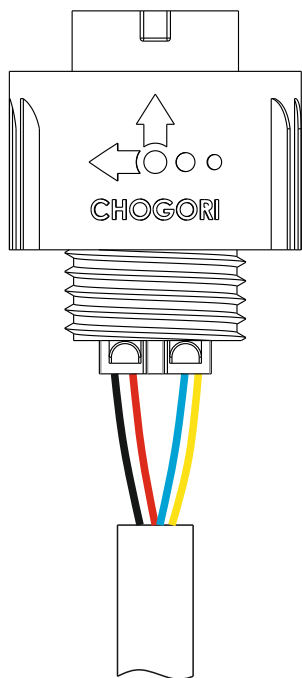


Power

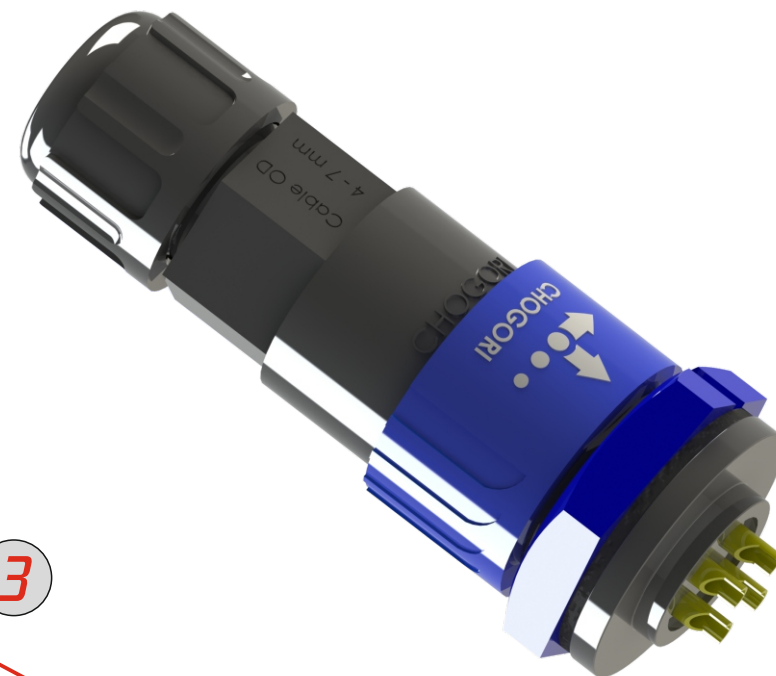
Ground



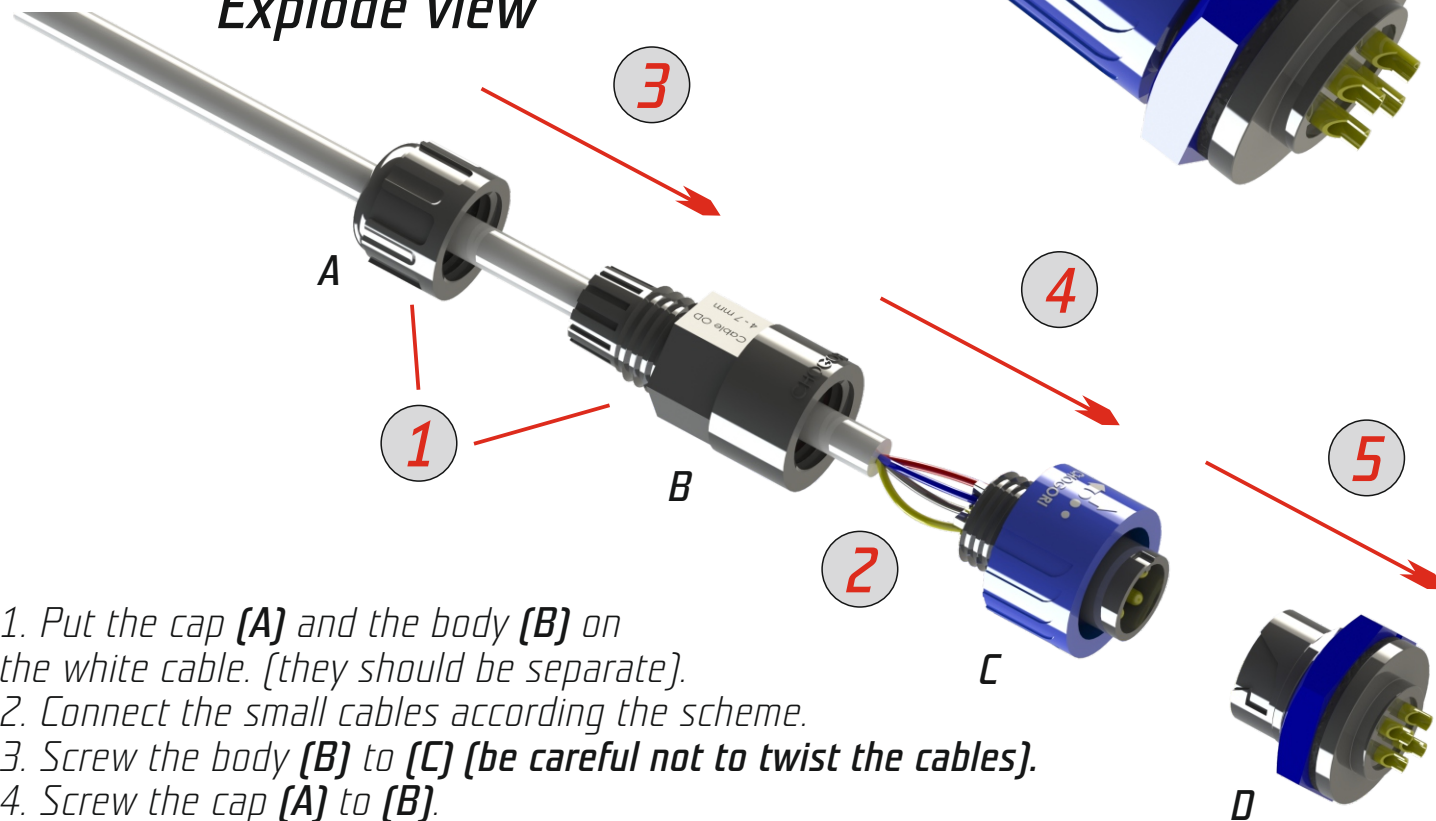
Cable schemes



Chogori assembled view



Explode view



1. Put the cap **(A)** and the body **(B)** on the white cable. (they should be separate).
2. Connect the small cables according the scheme.
3. Screw the body **(B)** to **(C)** (be careful not to twist the cables).
4. Screw the cap **(A)** to **(B)**.
5. Plug the connected pieces to the sensor port **(D)**.